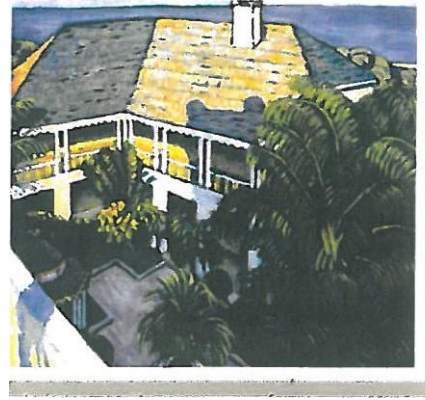


# Bonnet House Museum and Gardens



## **Summary of the Venue Experience**

### **OVER 90 YEARS IN THE MAKING - AWAITING YOUR ARRIVAL**

We invite you and your students into the private world of Bonnet House Museum & Gardens, a 35 acre subtropical estate situated on the coastal barrier island between the Atlantic Ocean and the Intracoastal Waterway. The estate was once the winter residence of early 20th century American artist Frederic Bartlett and pioneer Hugh Taylor Birch. Bonnet House offers unique and interactive learning opportunities for students to experience a combination of fine art, local history and life sciences. Listed on the National Register of Historic Places, Bonnet House allows students to step back in time and experience a rare piece of old South Florida.

Bonnet House offers six interdisciplinary community-based programs designed for educators looking for an innovative approach to engage students and meet today's education demands. Each education program is tailored to various grade levels, learning styles and interests. Florida Standards are embedded within the lessons. These programs provide experiential learning along with cultural awareness.

If you are looking to involve students with hands-on activities, integrate character education with academic lessons and offer enriching curriculum opportunities, come to Bonnet House. We make Florida History come alive!

## **Contact Information**

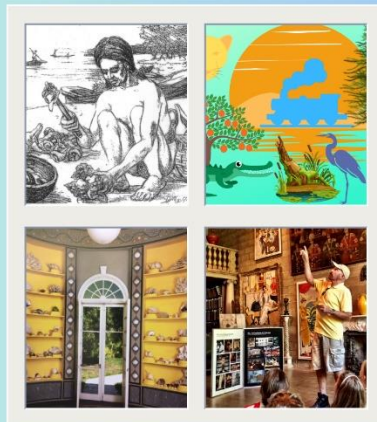
Linda Schaller, Director of Education & Volunteer Programs, Bonnet House Museum and Gardens. 900 N. Birch Road, Fort Lauderdale, FL 33304. Tel: 954-703-2606 or email: [lindaschaller@bonnethouse.org](mailto:lindaschaller@bonnethouse.org). VISIT OUR WEBSITE: [bonnethouse.org](http://bonnethouse.org)

## **Updated Photographs**

View a two minute [video](#) on Bonnet House Museum and Gardens.



## FLORIDA HISTORY







**SCIENCE**

**Food Chains**

**FOOD WEBS**

**Instant Ocean HYDROMETER**

A collage of science-related images on a yellow background. It includes a photograph of a pond with people, a man in a blue shirt holding a shell, a food web diagram, and an Instant Ocean hydrometer. The word "SCIENCE" is written in large, stylized blue letters across the center.



## HOUSE OF REFUGE



IN 1876 THE U.S. LIFE SAVING SERVICE OPENED FIVE "HOUSES OF REFUGE" ON THE SOUTHEASTERN COAST OF FLORIDA FOR SHIPWRECKED MARINERS. THEY WERE LOCATED EVERY 25 MILES FROM MIAMI TO NORTH JUPITER INLET. THE STATIONS WERE MANNED BY A KEEPER AND FAMILY. EACH HOUSE HAD TWENTY-FIVE BEDS AND KITCHEN FACILITIES. THERE IS ONE REMAINING HOUSE OF REFUGE IN STUART THAT IS LISTED AS A HISTORIC SITE.

THE FORT LAUDERDALE HOUSE OF REFUGE (#4) WAS BUILT NEAR THIS SPOT ON WHAT WAS TO BECOME BONNET HOUSE PROPERTY.

ACCIDENTALLY BUILT HERE, IT WAS MOVED SOUTH TO THE INTENDED SITE IN THE BAHIA MAR AREA IN 1891. THE BUILDING (COAST GUARD BASE #4) WAS DESTROYED BY THE GREAT MIAMI HURRICANE ON SEPTEMBER 18, 1926.



# BONNET SLOUGH SHORE AND WATERWAY RESTORATION PROJECT



THE BONNET SLOUGHS ARE NATURALLY OCCURRING BODIES OF FRESH WATER. AT ONE POINT, THESE WATERS WERE PART OF A NETWORK THAT EXTENDED APPROXIMATELY NINE MILES NORTH AND SOUTH ALONG BROWARD COUNTY'S BARRIER ISLAND. LARGELY DESTROYED BY COASTAL DEVELOPMENT, BONNET HOUSE AND HUGH TAYLOR BIRCH STATE PARK PRESERVE ALL THAT REMAINS OF THESE WATERWAYS.

EVELYN BARTLETT HAD THE SLOUGHS MANICURED IN THE 1930S, ADDING ROYAL PALMS ALONG THE SHORELINE AND A CORAL ROCK EMBANKMENT. THE SLOUGHS HAVE HAD LITTLE ATTENTION SINCE THAT TIME. VEGETATIVE DEBRIS HAS BUILT UP OVER NEARLY 100 YEARS CREATING A MUCKY BOTTOM WHILE UNTAMED VEGETATION (INCLUDING INVASIVE EXOTIC SPECIES LIKE MELALEUCA) HAVE OBSCURED THE EASTERN SHORELINE.

BONNET HOUSE HAS EMBARKED ON A MULTI-YEAR PROGRAM TO CLEAN THE SLOUGHS AND RESTORE A PORTION OF THEIR EASTERN SHORE. INVASIVE PLANTS WILL BE REMOVED, AND VEGETATION TRIMMED TO MINIMIZE ADDITIONAL MATERIAL FROM FALLING INTO THE SLOUGHS. TWO DECORATIVE ISLANDS NEAR THE EASTERN SHORE—CALLED SWAN ISLANDS BY THE BARTLETTS—WILL BE RESTORED AS WILL THE CORAL ROCK EMBANKMENT.

THE MOST IMPORTANT PART OF THE PROJECT WILL BE REMOVAL OF SEVERAL FEET OF MUCK THAT WILL IMPROVE WATER QUALITY AND ENSURE THE SLOUGHS REMAIN A PART OF THE BONNET HOUSE STRUCTURED LANDSCAPE. THIS WILL BE ACCOMPLISHED THROUGH A VACUUMING PROCESS THAT WILL REMOVE SILT FROM THE SLOUGH BOTTOMS WITHOUT DISTURBING ANIMAL LIFE. AT THE END OF THE PROJECT, A SMALL PUMP SYSTEM WILL BE INSTALLED TO IMPROVE WATER CIRCULATION AND HELP PREVENT ALGAE BLOOMS AND THE NEED FOR CHEMICAL TREATMENT.

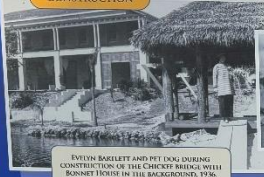
THIS PROJECT IS ESTIMATED TO COST BETWEEN \$400,000 AND \$500,000. BONNET HOUSE IS PLEASED TO HAVE RECEIVED A GENEROUS GRANT FROM THE COMMUNITY FOUNDATION OF BROWARD, WITH VALUABLE SUPPORT FROM SPIRIT AIRLINES, THE MARY AND ALEX MACKENZIE COMMUNITY IMPACT FUND, AND THE FREDERICK A. DELUCA FOUNDATION BROWARD COMMUNITY FUND TO COMPLETE THIS IMPORTANT WORK.



# CHICKEE BRIDGE

FREDERIC CLAY BARTLETT WANTED A THATCHED ROOF BRIDGE TO GIVE RESPITE AND ACCESS ACROSS THE MARSH TO THE ATLANTIC OCEAN BEYOND. SO, IN 1936, THE FAMILY HIRED A LOCAL SEMINOLE COMPANY TO BUILD A CHICKEE BRIDGE. "CHICKEE" IS THE SEMINOLE WORD FOR HOUSE. THESE STRUCTURES WERE TRADITIONALLY BUILT WITH PALMETTO THATCH AND CYPRESS LOG FRAME SOME FEET OFF THE GROUND TO PROTECT THEM FROM FLOODING, ANIMALS, AND TO PROVIDE COOLING.

## CONSTRUCTION

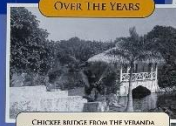


EVILYN BARTLETT AND PET DUAL DURING CONSTRUCTION OF THE CHICKEE BRIDGE WITH BONNET TOWER IN THE BACKGROUND. 1940. THE ROYAL PALMS WERE JUST SAPLING!!

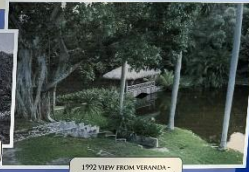


CHICKEE BEING BUILT BY SEMINOLE PEOPLE, 1936.

## OVER THE YEARS



CHICKEE BRIDGE FROM THE VERANDA WITH THE TREE AND ROYAL PALMS CA. 1940s.

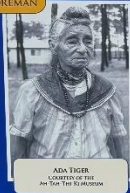


1992 VIEW FROM VERANDA - HOW THE TREES HAVE GROWN

## THE SEMINOLE WOMAN FOREMAN

SEMINOLE (SPHONIA) TIGER OF THE SNARK CLAN WAS THE FOREMAN FOR THE PROJECT AT THE TIME. IT WAS VERY UNUSUAL FOR A SEMINOLE WOMAN TO BE IN A POSITION TO HAVE THAT POSITION. HER DAUGHTER, BETTY MAE TIGER, REMAINS AND THAT HER MOTHER WAS A BLOOD COLORED SEMINOLE.

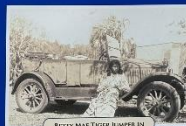
BETTY MAE WAS ALSO A SEMINOLE. LEGEND HAS IT THAT BETTY MAE WAS THE FIRST CHIEFMAN OF THE SEMINOLE TRIBE OF FLORIDA. THE FIRST SEMINOLE WOMAN TO BE A HIGH SCHOOL GRADUATE AND ONE OF TWO WOMEN APPOINTED BY PRESIDENT ROOSEVELT TO THE NATIONAL COUNCIL ON INDIAN OPPORTUNITIES, AMONG MANY OTHER ACCOMPLISHMENTS.



ADA TIGER, MOTHER OF THE PM THE TRIBE CHIEF.

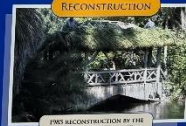


BETTY MAE TIGER DWYER, GRANDDAUGHTER OF SEMINOLE TRIBE CHIEFMAN. LIVES IN THE OLD BIRCH STATE PARK.



BETTY MAE TIGER DWYER IN FRONT OF HER MOTHER'S HOME IN THE OLD BIRCH STATE PARK, FLORIDA.

## RECONSTRUCTION



1992 RECONSTRUCTION BY THE CHICKEE BRIDGE. WITH ALL RECONSTRUCTION WITH PALMETTO THATCH AND CYPRESS.

# THE COTTAGE AND ITS FIRST FAMILY

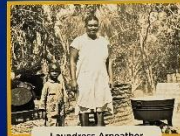
Arneather and Dewey Hawkins were the first to live in the "Caretaker's Cottage" (1920s). They were joined by their nephew, Alonzo Nash in 1931 and their niece, Irene Riley in 1937. The cottage was later expanded and used by other caretakers and their families when the Hawkins family moved to a bigger house located in what is now known as Hugh Taylor Birch State Park.



This house, built in 1920, was originally just two rooms - a parlor on the first floor and a bedroom on the second. All meals were prepared and eaten in the main house.



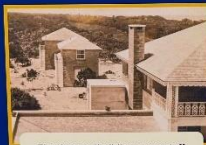
Caretaker and chauffeur Dewey Hawkins and Hugh Taylor Birch, 1940.



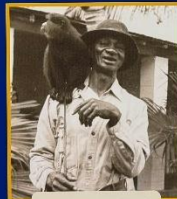
Landress Arneather Hawkins with nephew Alonzo Nash, boiling laundry.



Arneather with her cousin Marie Hawkins Little, head cook, 1930s.



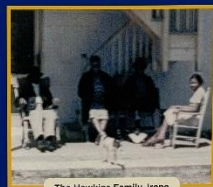
The three outbuildings were staff quarters. This building housed the caretaker and their family. The two to the east of here housed the cook and chauffeur. The maids and butler had rooms in the main house.



Caretaker Henry "Pops" Hawkins, Dewey's father, with a monkey.



Alonzo Nash (middle) with his Aunt Arneather and Uncle Dewey Hawkins, who raised him like a son.



The Hawkins Family, Irene Hart (far right) and dog Spotty on the cottage porch, 1930s/1940s.

# BIRCH & BARTLETT EMPLOYEES

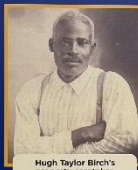
Bonnet House has had many staff members over the years who ensured the estate ran smoothly. This included caretakers, chefs, cooks, wait staff, butlers, maids, carpenters, groundskeepers, and chauffeurs. All were paid employees. Here is a look at just a few of over a hundred of those who cared for this land and its inhabitants for its 75 years as a residence.



Butler John Reid, 1960s.



Caretaker Dewey Hawkins feeding swans, 1930s.



Hugh Taylor Birch's property caretaker, town representative, and friend, Jeff Lockett, 1920s.

Employees were considered family and the Bartlets often brought them gifts from their travels abroad and showed interest in their personal lives and comfort.



Sisters Marie Hawkins Little, head cook (left) and Gussie Pope, housekeeper (right), 1950s.



Evelyn with chauffeur Paul Head at Bothways Farm in Massachusetts, 1980s.



Eliza Wispler and Martha Schneider, maid and cook for Mr. Birch, 1930s/1940s.

Homes were maintained for employees both on-and-off property in Florida, and Irene Hart once said the Bartlets treated each of them, "like a member of the family."



Evelyn (on park) with butler David Harnell, Chef Jackie Samuels, and Evelyn's personal maid Florence Christopher, 1990s.



Maid Bridget Cronin, 1990s.

Some of the key staff members would migrate with the Bartlets between Florida and Massachusetts.



Carpenter Frank West with wildcat caught on property, 1940s/1950s.







## **Specialized Grades**

ALL BONNET HOUSE PROGRAMS CAN BE ADJUSTED TO ANY LEVEL INCLUDING SPECIAL EDUCATION CLASSES.

## **Prices**

### **IMAGES AND IMPRESSIONS OF BONNET HOUSE**

Cost \$8.00 per student with **60 students MAXIMUM**

Program Length: 2 hours

### **AN ECO HERE & AN ECO THERE**

Cost: \$8.00 per student

Program Length: 2 hours

### **TIME TRAVEL AT BONNET HOUSE**

Cost: \$8.00 per student

Program Length: 2 hours

### **The Last Egret – 2 hour format**

Cost: \$8.00 per student

Program Length: 2 hours

### **The Last Egret – 4 hour format**

Cost: \$14.00 per student

Program Length: 4 hours

### **An Old South Florida Portrait**

Cost: \$14.00 per student

Program Length: 4 hours



---

# Hours of Operation

## General Admissions

Tuesday – Friday 11 AM – 4:00 PM. No admissions after 3:00 PM

Saturday & Sunday 11 AM – 5:00 PM No admissions after 4:00 PM

## Pre-reserved Guided Tour

Tuesday – Saturday 10 AM

## Education Programs

Prearranged 9 AM to close Tuesday through Friday.

EDUCATION PROGRAMS: MAXIMUM 70 students per day (multiple days can be booked through the school year).

PAYMENT: Fees are due before or on the day of the (check, credit card, or cash). One classroom teacher and one chaperone for every 10 students are complimentary. Additional chaperones each pay the student fee.

AVAILABLE FUNDS: Bonnet House Museum & Gardens is an approved cultural institution for the School Board of Broward County's Supplemental Arts and Sciences Program (SASP). Check with your School.

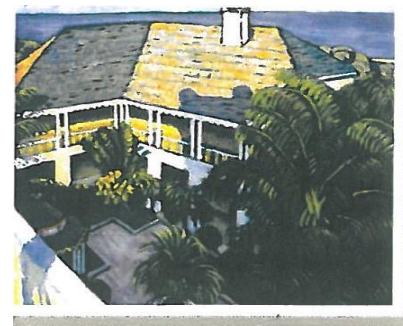
Special Pricing for Title 1 schools - please ask while setting up registration.

Picnic tables are available in the shaded grove on Bonnet House property (unsheltered).

# Expectations for Students

## IMAGES AND IMPRESSIONS OF BONNET HOUSE

Young artists find inspiration at Bonnet House. Owner/artist Frederic Clay Bartlett collected paintings, sculptures, artifacts and murals that are displayed throughout the property as well as his own works of fine art and decoration. The Bonnet House grounds also provide inspiration from nature, cultural history, design and architecture. Students use images and their impressions of Bonnet House to create original artwork.



Cost \$8.00 per student with **60 students MAXIMUM**

Program Length: 2 hours



## AN ECO HERE & AN ECO THERE

Experience firsthand the House ecosystems of South Florida—beach dune, coastal hammock, secondary dune, fresh water slough and mangrove wetland—at Bonnet House. Walk along the trails and step back in time to experience the influence of geography on the history of Florida. Explore the rare natural habitats of a Florida barrier island. The five ecosystems at Bonnet House provide habitat for many kinds of wildlife. Students will experiment with water samples, and they'll learn about Florida history while touring the home of Frederic Bartlett and his family.

Cost: \$8.00 per student

Program Length: 2 hours

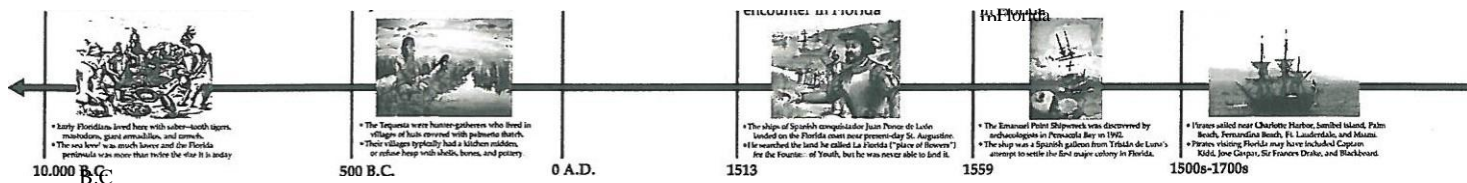


## TIME TRAVEL AT BONNET HOUSE

Walk the trails and cross paths of earlier inhabitants of Fort Lauderdale beach—learn how ancient Indians, Spanish Explorers, African-Americans, a 19th Century real estate tycoon, two 20th century artists and a poet came together the years to create one of South Florida's most treasured legacies.

Cost: \$8.00 per student

Program Length: 2 hours



## The Last Egret – 2 hour format

Bonnet House Museum & Gardens presents a unique, exciting program based on Harvey Oyer's book, *The Adventures of Charlie Pierce*. This program explores pioneer life as experienced by Charlie, a young boy growing up in the untamed of Florida. Students will step back in time as they learn colorful tales of Seminoles and early citizens. Valuable science lessons include a presentation about the Barrier Island Eco Systems and its sensitive food chain.

Cost: \$8.00 per student

Program Length: 2 hours





### **The Last Egret – 4 hour format**

Bonnet House Museum and Gardens and Historic Stranahan House partner to present a unique, exciting program based on Harvey Oyer's book, *The Adventures of Charlie Pierce, **The Last Egret***. This program explores pioneer life as experienced by Charlie, a young boy growing up in the untamed wilderness of Florida. Students will step back in time as they learn colorful tales of Seminoles and early citizens. As 'pioneers' students will 'barter' for supplies at Frank Stranahan's Trading Post and participate in hands-on activities including water testing and walking the path of the Barefoot Mailman and butter making and ringing the original bell to call the ferry at Stranahan House. Valuable science lessons include a presentation about the Barrier Island Eco Systems and its sensitive food chain.

Cost: \$14.00 per student

Program Length: 4 hours

### **An Old South Florida Portrait**

Explore two historic homes of pioneer families from the early 20<sup>th</sup> century. Examine local history while witnessing the environmental impact on the historical sites Bonnet House on Fort Lauderdale's beach and Stranahan House on the New River. Learn how factors such as population growth, human migration, improved methods of transportation and communication influenced the development of this land and surrounding area. Students participate in hands-on activities, including water testing and walking the path of the Barefoot Mailman at Bonnet House and butter making and ringing the original bell to call the ferry at Stranahan House.

Cost: \$14.00 per student

Program Length: 4 hours